

GLENN MURCUTT

details revisited

Introduction/ Gerard Damiani	7
List of Projects / Students	
Magney House/ José Pertierra-Arrojo	8/9
Simpson Lee House/ Sima Bdeir	10/11
House in Mt. Wilson/ Marcos Gonzalez- Bode	12/13
Lewin Murcutt House/ Katherine Duerr	14/15
Fredericks House/ Samuel Friedlander	16/17
Simpson Lee House/ Kevin Hyun	18/19
Marikia-Alderton House/ Amir-Behan Jahanbin	20/21
Arthur and Yvonne Boyd Education Center/ Richard May	22/23
Arthur and Yvonne Boyd Education Center/ Harris Mazur	24/24
Magney House/ Joel McCullough	26/27
Arthur and Yvonne Boyd Education Center/ Thomas Sterling	28/29
Fletcher Page House/ Dan Sztanga	30/31



Details Revisited: The detailing methodologies of Glenn Murcutt
Gerard Damiani, Associate Professor

The following drawings were prepared as part of the architectural elective Detailing Architecture in the spring of 2015 at Carnegie Mellon University, School of Architecture.

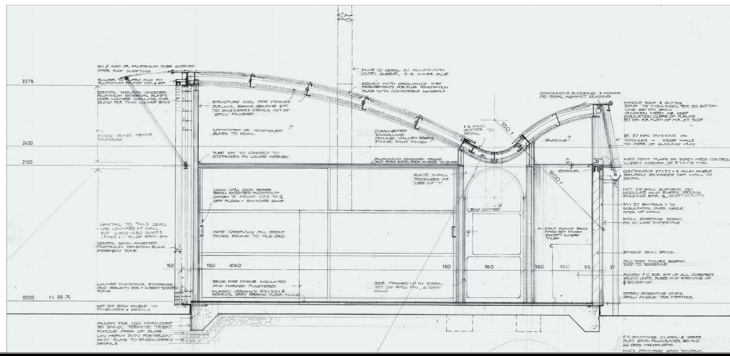
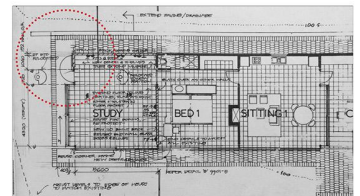
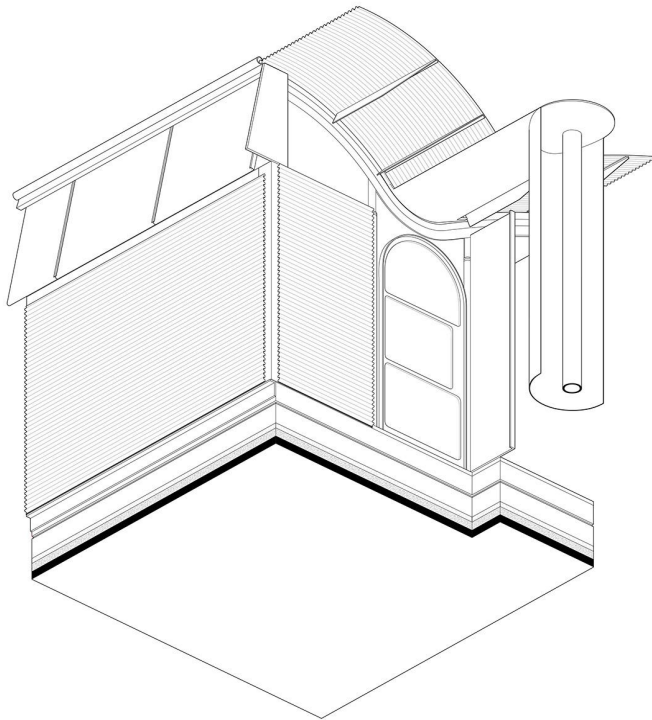
Glenn Murcutt is one of a limited group of architects who allows through publication a snap shot of his process. The drawings he presents vary from the initial sketches to detailed construction documents. Preliminary drawings show programmatic relationships as well as how those relationships address the conditions of site topography, seasonal orientation and airflow. Other drawings give a glimpse into how construction materials and their assemblies can directly inform, advance and elaborate the initial project responses. Lastly, his sharing of construction documents brings into light to the builder how to execute these desires. The drawings Murcutt presents in these publications are fragmentary in nature- never showing completely how these documents lead to the built architectural work.

This class uses these drawings as a starting point from which to speculate. This allows each student to speculate how these published drawings might lead to an overall three-dimensional construction assembly.

These drawings are not to be viewed as factual, accurate representations of the actual assemblies, instead they are to be viewed as speculations allowing the student to gain an insight into how an architect should think of the detail as a thematic functional assembly that reinforces the overall architectural framework.

The objective is for the student to understand that the role of the detail and the materials that constitute it are not to be thought of as products, but instead as components that enhance the functional, performative and aesthetic goals of a true work of architecture.

Glenn Murcutt is an Australian architect whose work is grounded in the Australian landscape that pays astute attention to the environment. These observations inform his architecture through an economical palette of materials. Murcutt has been recognized for his accomplishments through numerous publications and awards including the 1992 Alvar Aalto Medal, the 2002 Pritzker Prize and the 2009 AIA Gold Medal.



MAGNEY RESIDENCE GLENN MURCUTT

MORUYA, NSW, AUSTRALIA
1982 - 1984

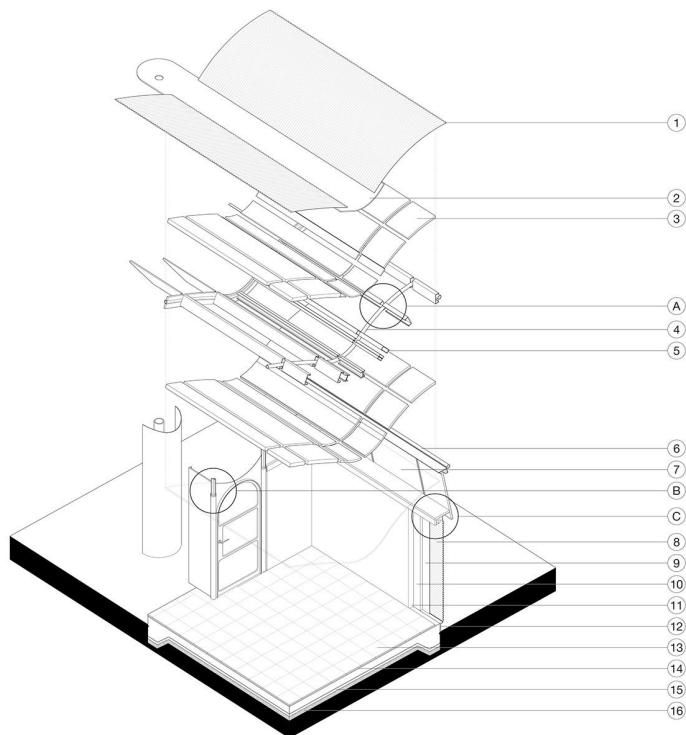
DETAIL TYPE:
ROOF STRUCTURE

DETAILING ARCHITECTURE

SPRING 2015

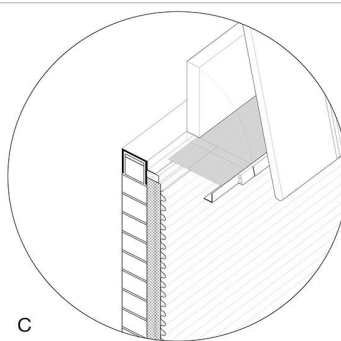
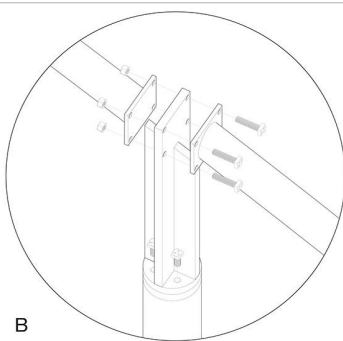
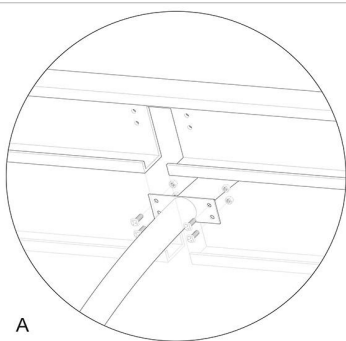
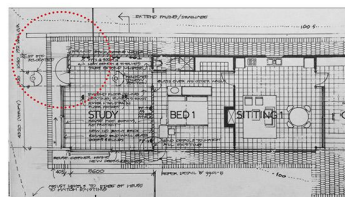
INSTRUCTOR: DAMIANI

DRAWN BY: JOSE R. PERTIERRA



KEY:

1. CORRUGATED GALVANIZED STEEL
2. GALVANIZED GUTTER
3. INSULATION
4. GALVANIZED PIPE FRAME
5. C CHANNEL BEAMS
6. ALUMINUM TUBE
7. GLAZING
8. CORRUGATED GALVANIZED STEEL
9. INSULWOOL INSULATION
10. BATTEN BOARD INSULATION
11. SINGLE SKIN BLOCK
12. GALVANIZED ANGLE
13. CERAMIC FLOOR TILING
14. BACKERBOARD
15. HARDCORE SAND, TERMITE GUARD
16. HEAVY DUTY FORTECON



MAGNEY RESIDENCE
GLENN MURCUTT

MORUYA, NSW, AUSTRALIA
1982 - 1984

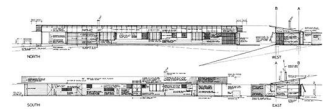
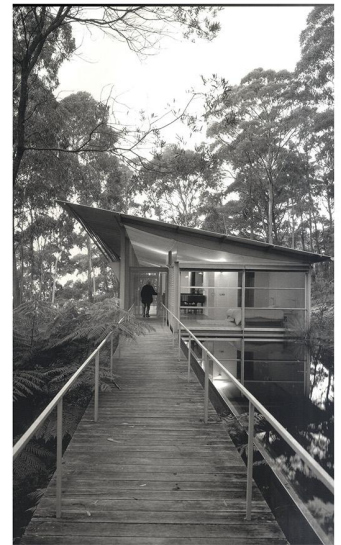
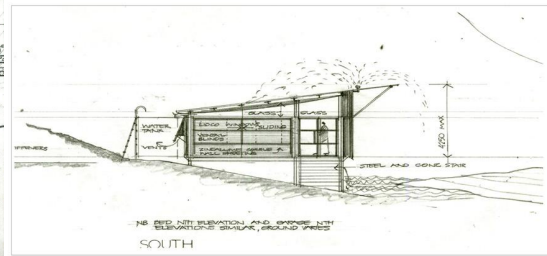
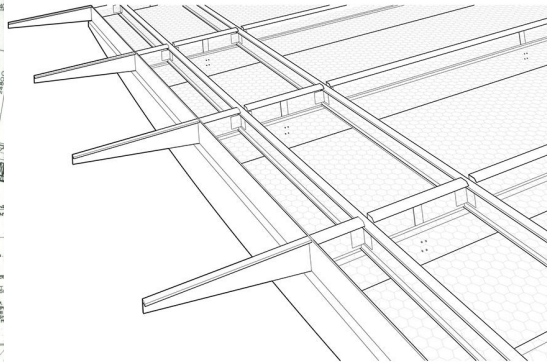
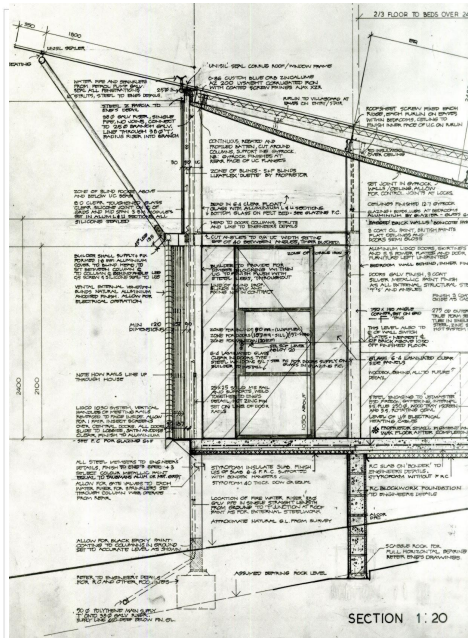
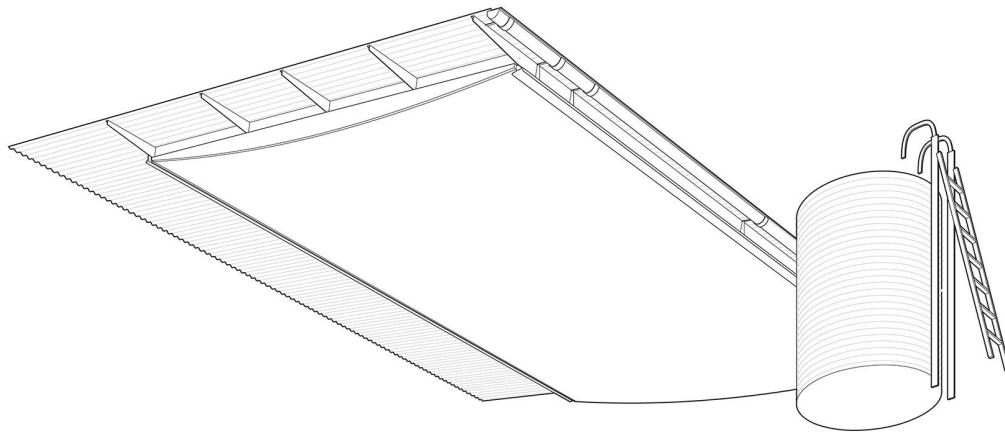
DETAIL TYPE:
ROOF STRUCTURE

DETAILING ARCHITECTURE

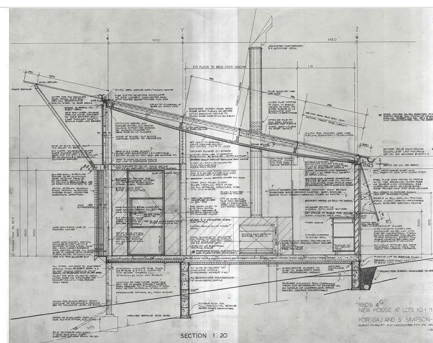
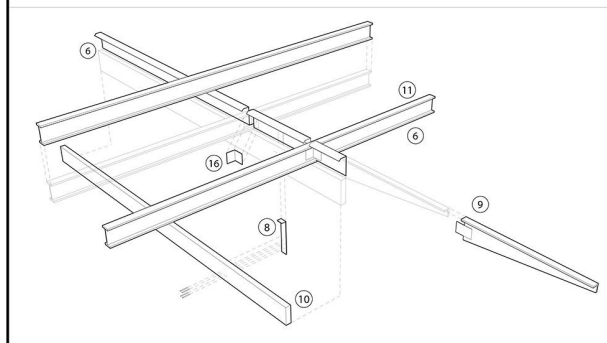
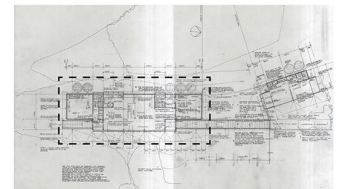
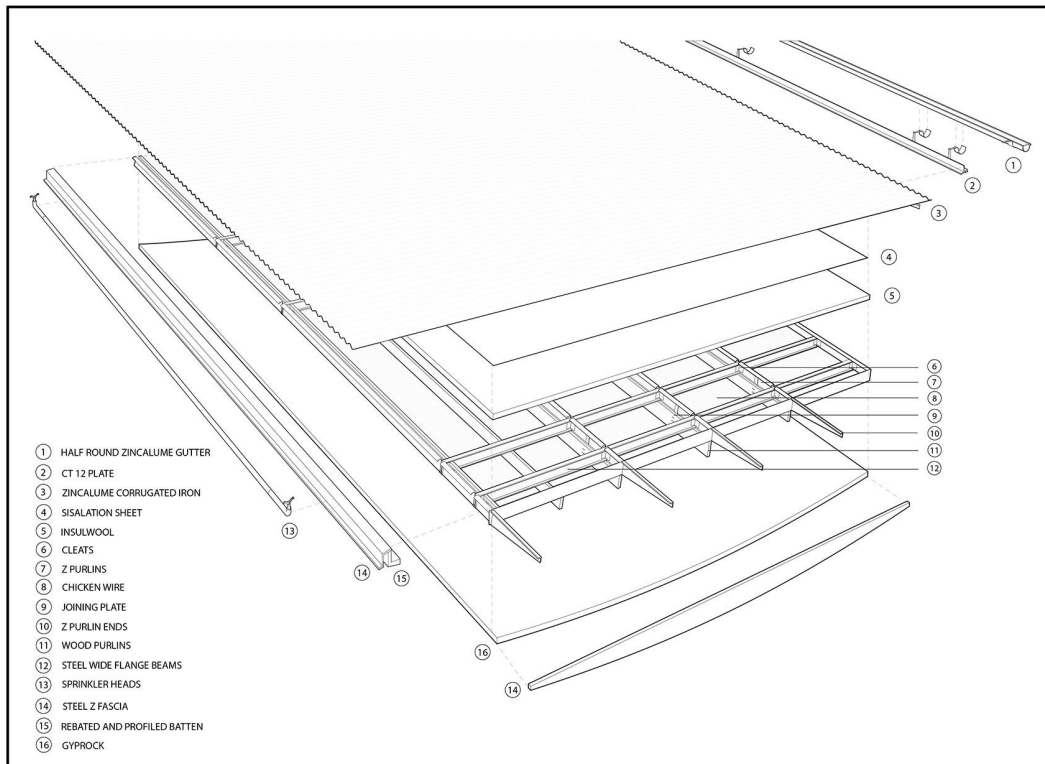
SPRING 2015

INSTRUCTOR: DAMIANI

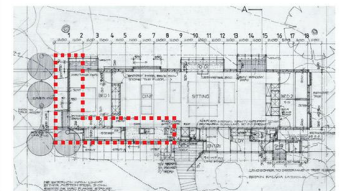
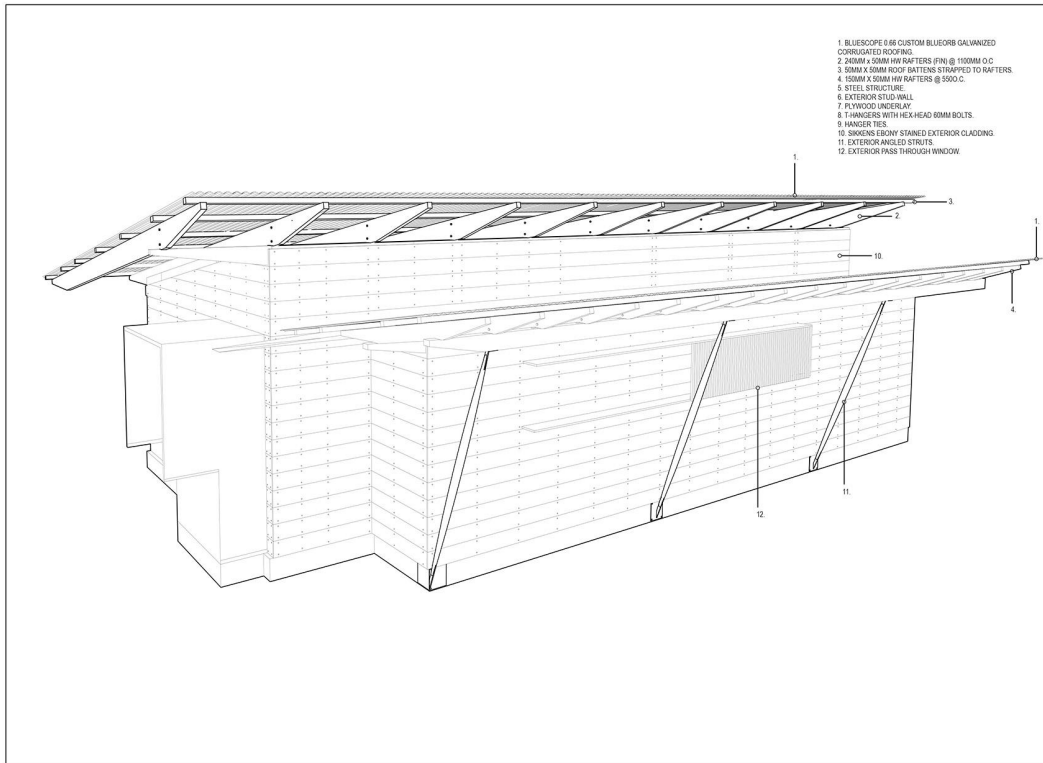
DRAWN BY: JOSE R. PERTIERRA



SIMPSON LEE HOUSE
GLENN MURCUTT
MOUNT WILSON, BLUE MOUNTAINS,
NEW SOUTH WALES, AUSTRALIA
1988-1993
DETAIL TYPE: ROOF DETAIL
DETAILING ARCHITECTURE
SPRING 2015
INSTRUCTOR: DAMIANI
DRAWING BY: SIMA BDEIR



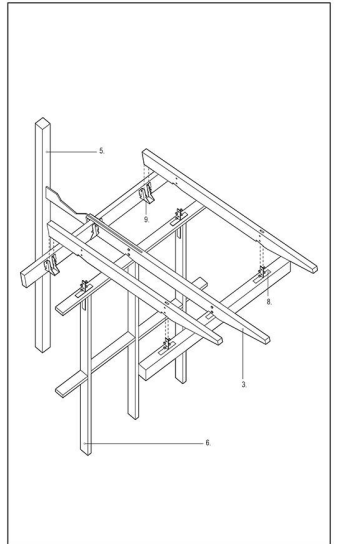
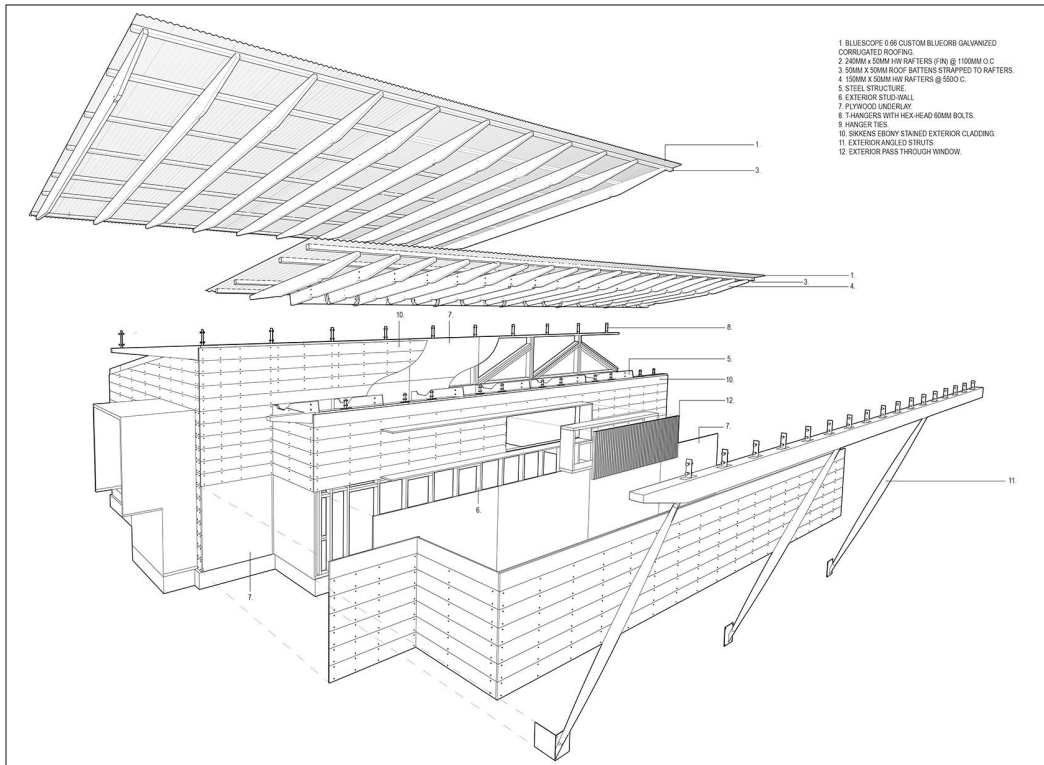
SIMPSON LEE HOUSE
 GLENN MURCUTT
 MOUNT WILSON, BLUE MOUNTAINS,
 NEW SOUTH WALES, AUSTRALIA
 1988-1993
 DETAIL TYPE: ROOF DETAIL
 DETAILING ARCHITECTURE
 SPRING 2015
 INSTRUCTOR: DAMIANI
 DRAWING BY: SIMA BDEIR



HOUSE IN MT. WILSON
GLENN MURCUTT
 BLUE MOUNTAINS, NSW, AU
 2005 - 2008

DETAIL TYPE:
CORNER ASSEMBLY

DETAILING ARCHITECTURE
 SPRING 2015
 INSTRUCTOR: DAMIANI
 DRAWING BY: MARCOS GONZALEZ-BODE



HOUSE IN MT. WILSON GLENN MURCUTT

BLUE MOUNTAINS, NSW, AU
2005 - 2008

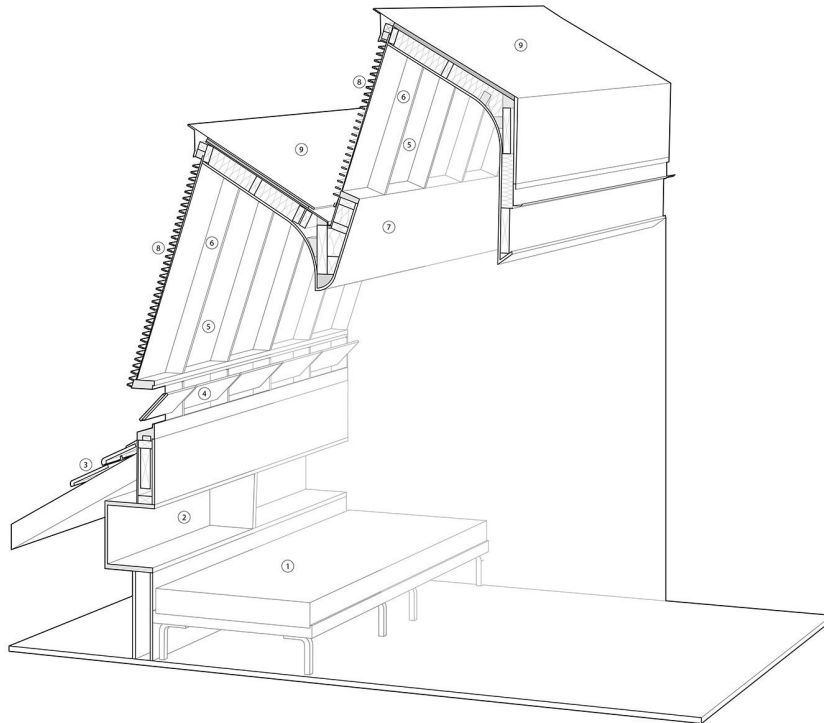
DETAIL TYPE:
CORNER ASSEMBLY

DETAILING ARCHITECTURE

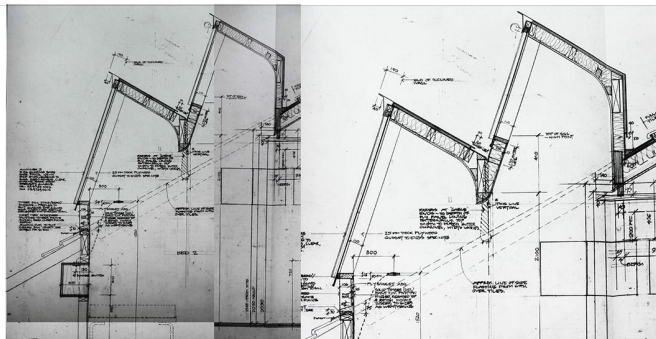
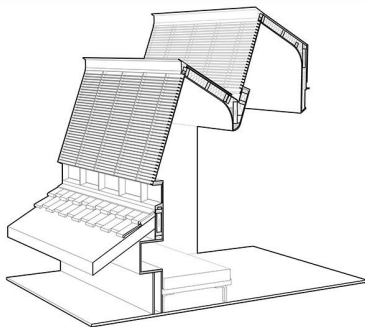
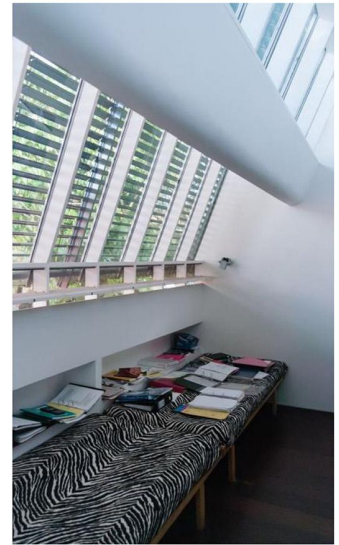
SPRING 2015

INSTRUCTOR: DAMIANI

DRAWING BY: MARCOS GONZALEZ-BODE

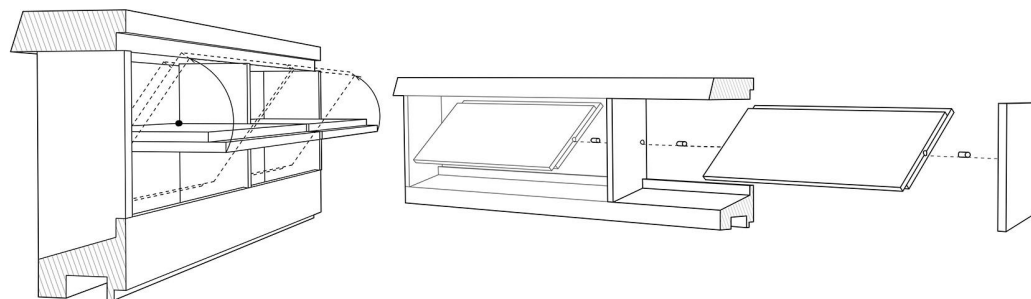
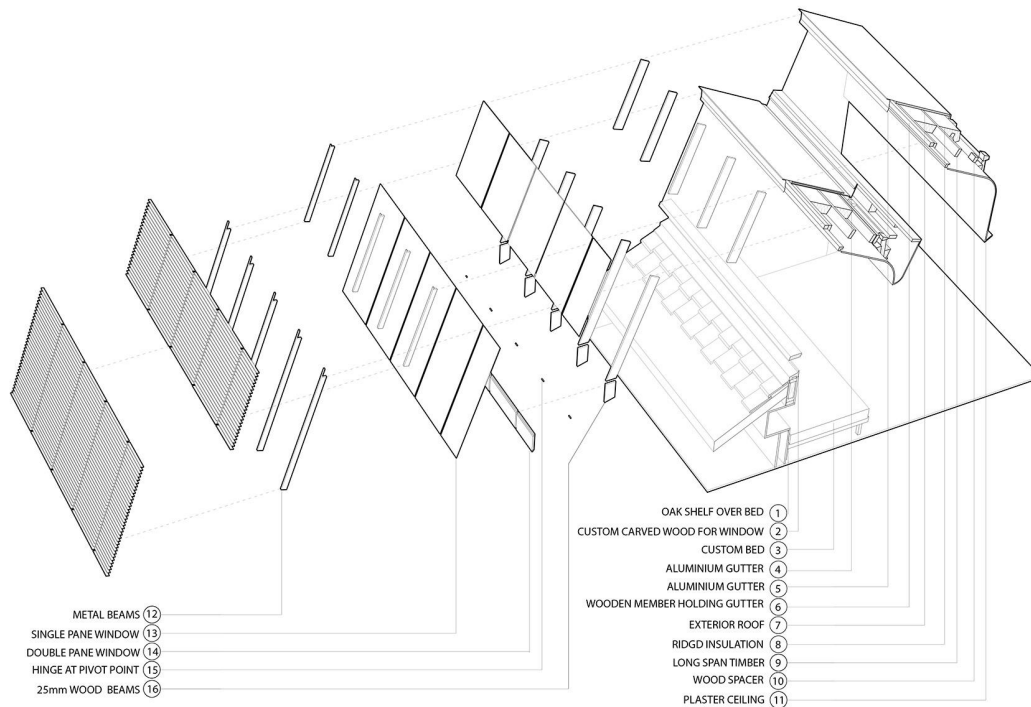


KEY:
 1. CUSTOM BED
 2. BOX SHELVES
 3. SHINGLE ROOF
 4. OPERABLE WINDOW
 5. INOPERABLE WINDOW
 6. WOODEN BEAMS
 7. PLASTER CEILING
 8. SHADING SYSTEM
 9. ROOF



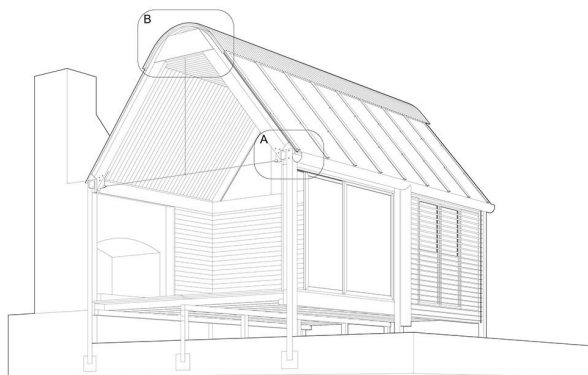
LEWIN MURCUTT HOUSE
 GLENN MURCUTT
 MOSMAN, NEW SOUTH WALES, AU
 1999- 2003
 DETAIL TYPE: WINDOW

DETAILING ARCHITECTURE
 SPRING 2015
 INSTRUCTOR: DAMIANI
 DRAWING BY: KATHEIRNE DUERR

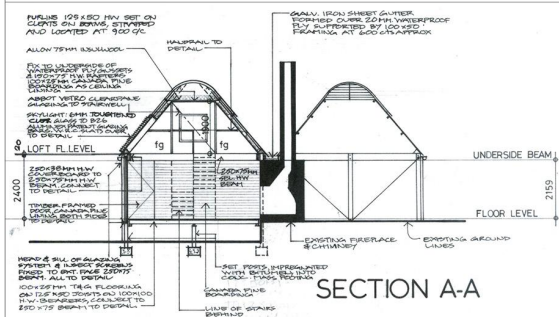
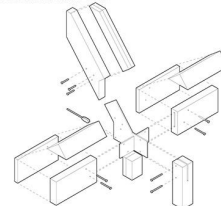


LEWIN MURCUTT HOUSE
 GLENN MURCUTT
 MOSMAN, NEW SOUTH WALES, AU
 1999- 2003
 DETAIL TYPE: WINDOW

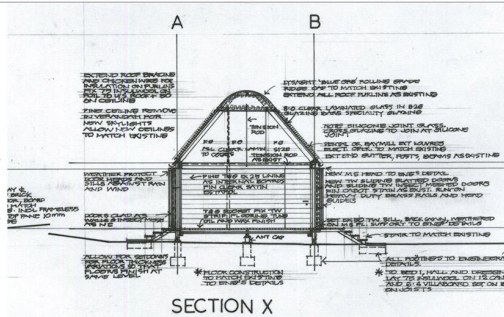
DETAILING ARCHITECTURE
 SPRING 2015
 INSTRUCTOR: DAMIANI
 DRAWING BY: KATHERINE DUERR



A. POST/ BEAM DETAIL



SECTION A-A



SECTION X

FREDERICKS HOUSE

GLENN MURCUTT

JAMBEROO

1981 - 1982

DETAIL TYPE: BUILDING ASSEM.
DETAILING ARCHITECTURE

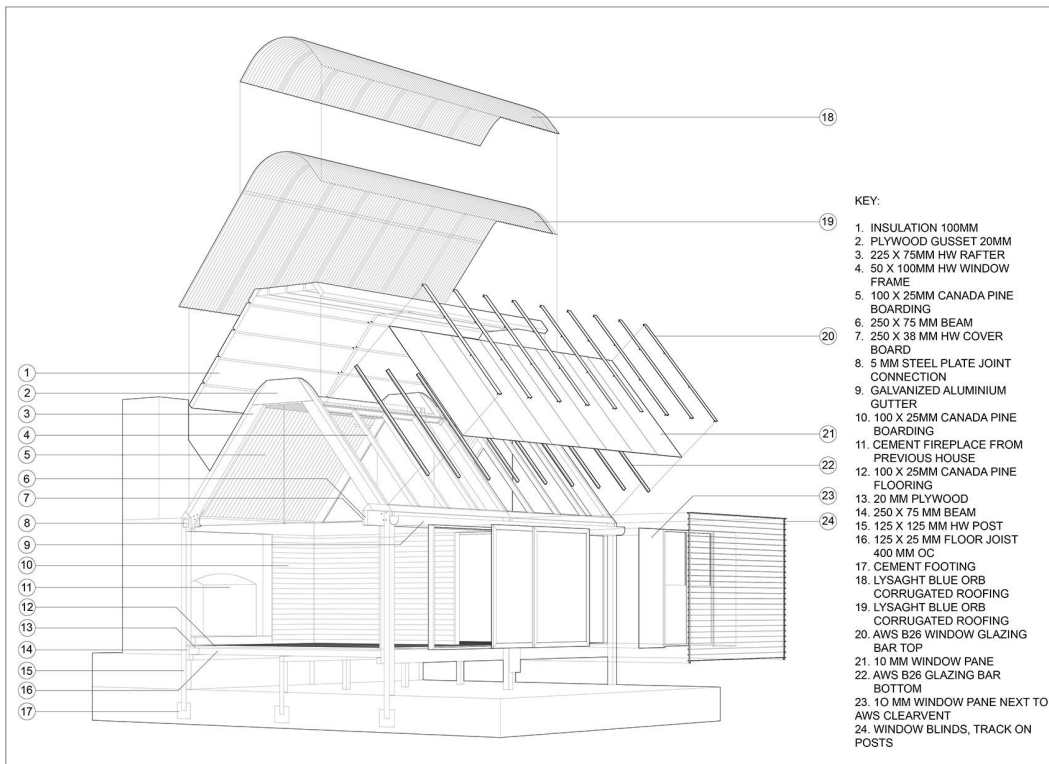
SPRING 2015

INSTRUCTOR: DAMIANI

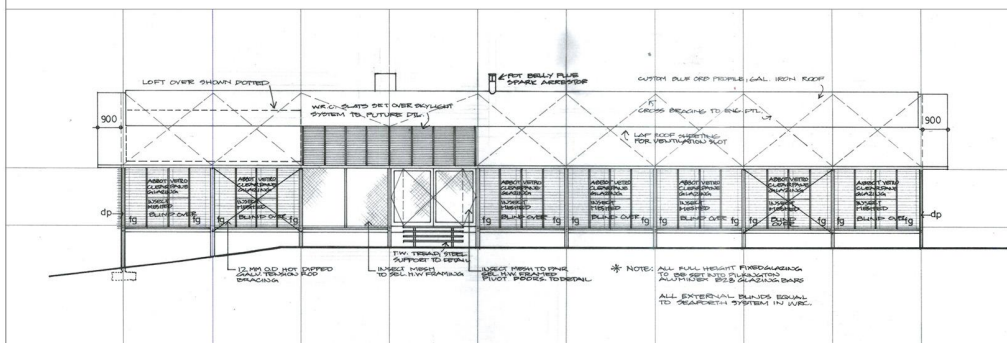
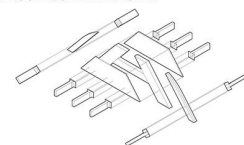
DRAWINGS BY: SAMUEL FRIEDLANDER

8128.2

RURAL WORKERS DWELLING
MILTON BROOK DEVELOPMENTS



B. ROOF ASSEMBLY DIAGRAM



FREDERICKS HOUSE

GLENN MURCUTT

JAMBEROO

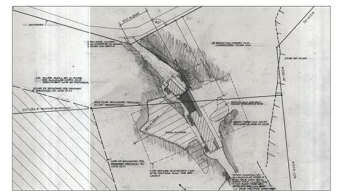
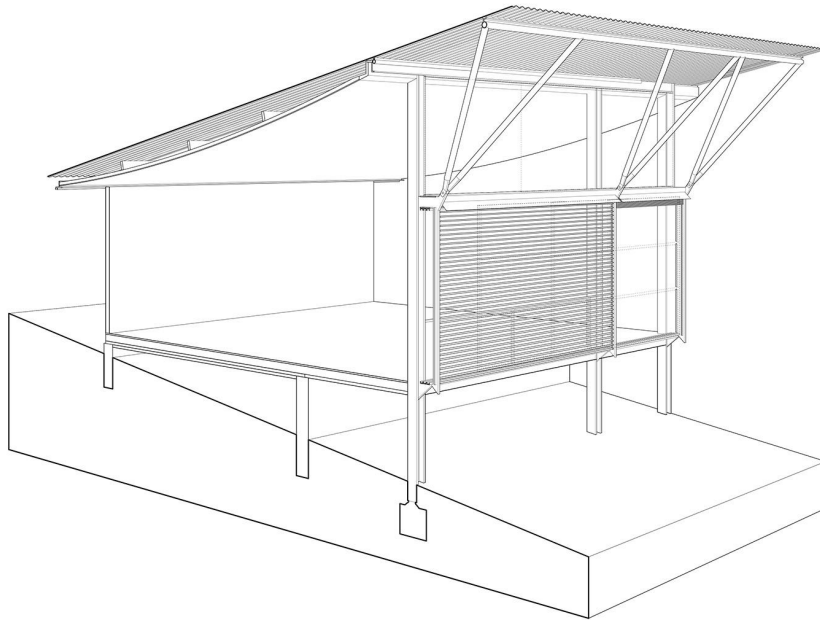
1981 - 1982

DETAIL TYPE: BUILDING ASSEM.
DETAILING ARCHITECTURE

SPRING 2015

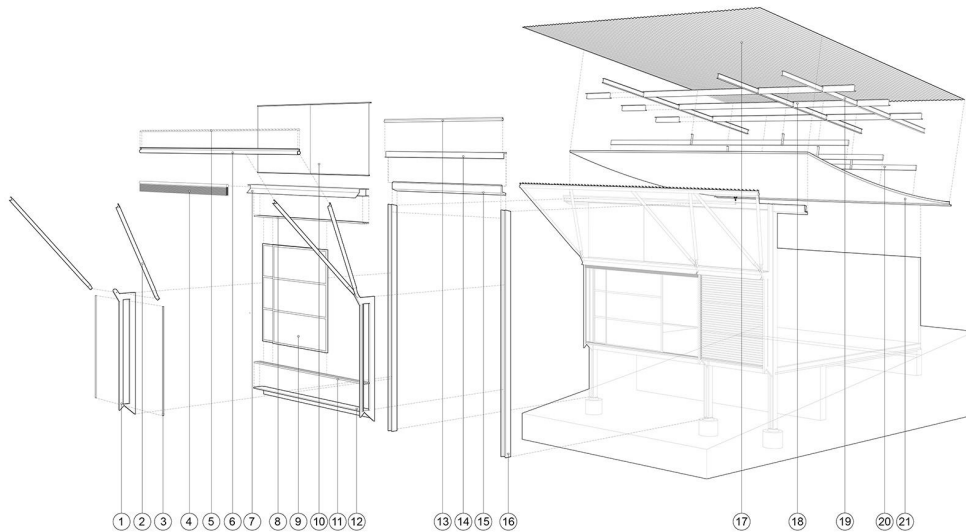
INSTRUCTOR: DAMIANI

DRAWINGS BY: SAMUEL FRIEDLANDER



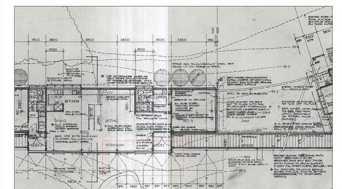
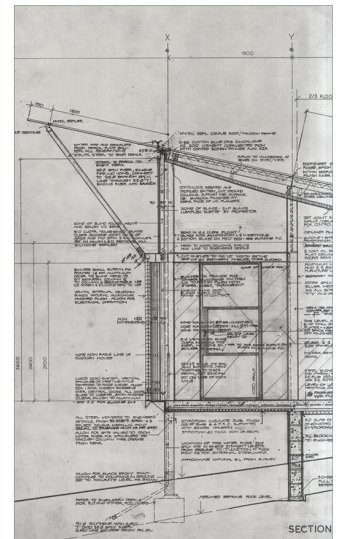
SIMPSON LEE HOUSE
GLENN MARCUS MURCUTT
BLUE MOUNTAINS, AU
1988-1993
DETAIL TYPE: EXTERIOR FACADE BAY

DETAILING ARCHITECTURE
SPRING 2015
INSTRUCTOR: DAMIANI
DRAWING BY: KEVIN HYUN



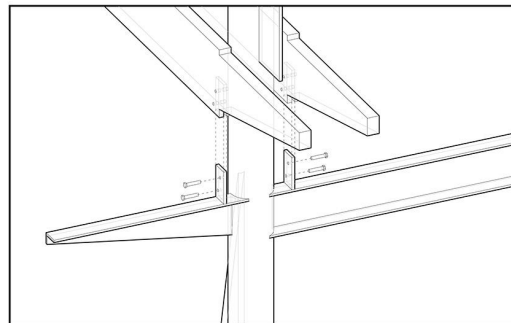
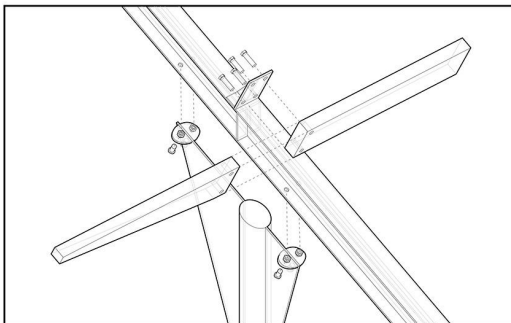
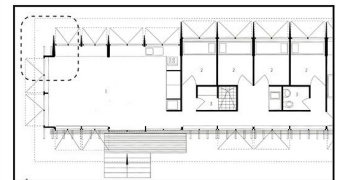
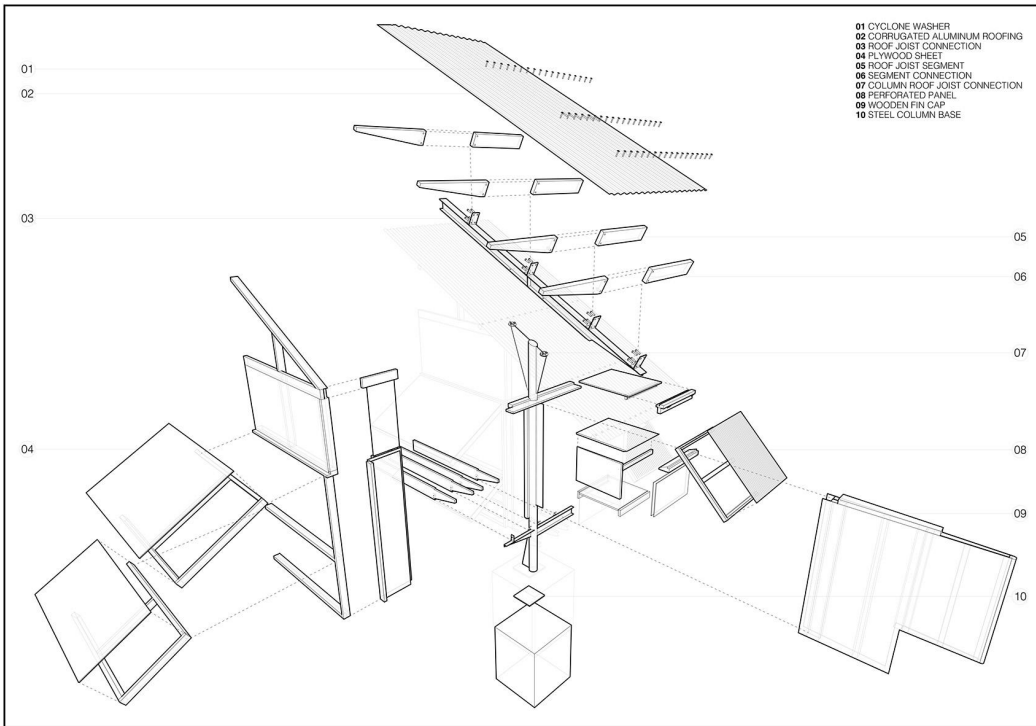
KEY:

- | | | |
|---------------------------|---------------------------------|-----------------------------------|
| 1 STEEL PLATE | 8 SLIDING DOOR TRACK | 15 BATTEN |
| 2 STRUT | 9 LIDCO 1030 SLIDING DOORS | 16 W COLUMN |
| 3 VENETIAN BLIND TRACK | 10 CLEAR TOUGHENED GLASS WINDOW | 17 CORRUGATED METAL ROOF |
| 4 EXTERNAL VENETIAN BLIND | 11 SLIDING DOOR TRACK | 18 Z PURLIN WITH CLEAT CONNECTION |
| 5 UNISIL SEAL | 12 STEEL ANGLE | 19 W BEAM |
| 6 ANGLE SEAT | 13 WATER AND SPRINKLER PIPE | 20 DIMENSIONAL LUMBER |
| 7 STEEL FLASHING | 14 STEEL Z FASCIA | 21 GYPROCK FINISH |



SIMPSON LEE HOUSE
GLENN MARCUS MURCUTT
BLUE MOUNTAINS, AU
1988-1993
DETAIL TYPE: EXTERIOR FACADE BAY

DETAILING ARCHITECTURE
SPRING 2015
INSTRUCTOR: DAMIANI
DRAWING BY: KEVIN HYUN

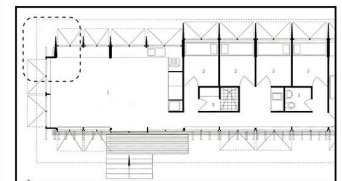
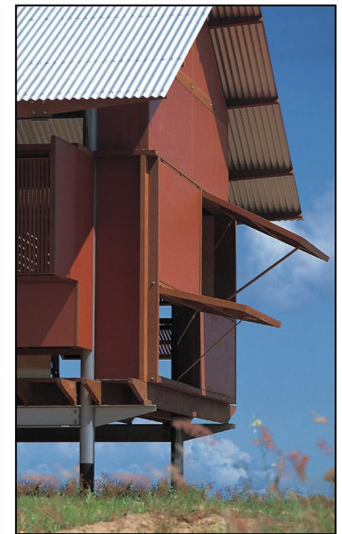
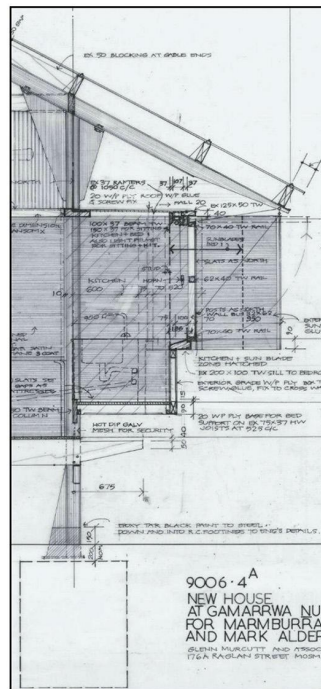
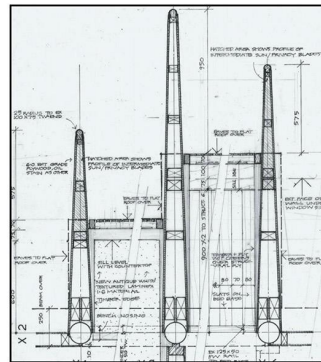
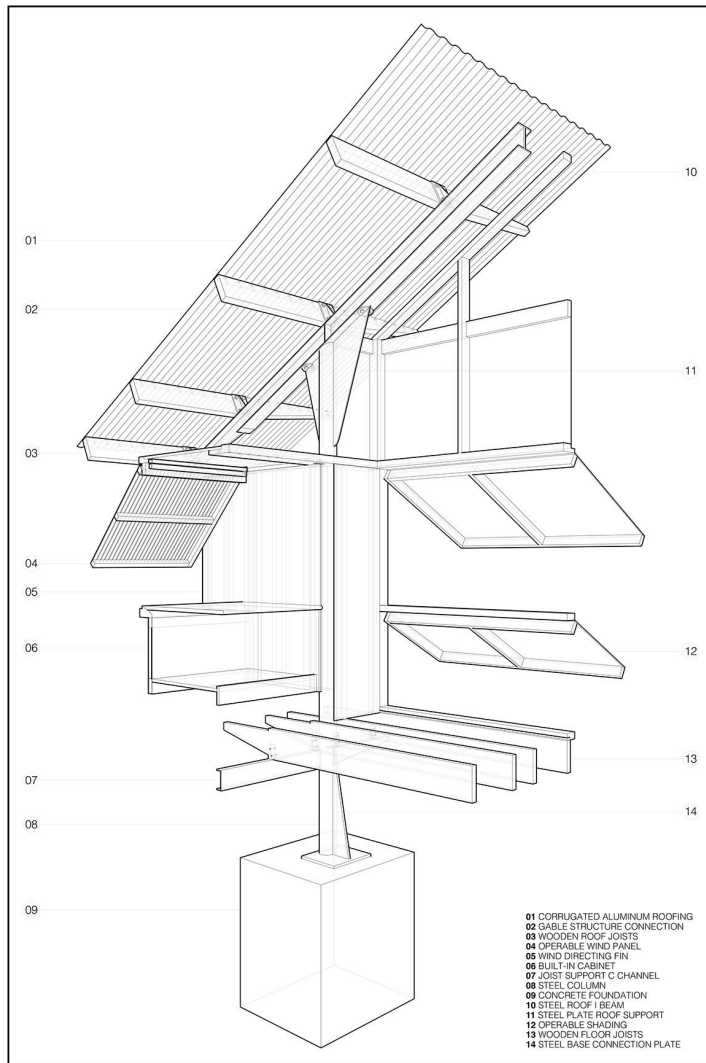


MARIKA-ALDERTON HOUSE
GLENN MURCUTT

EASTERN AMHEM LAND, AU
1991 - 1993

CORNER DETAIL

DETAILING ARCHITECTURE
SPRING 2015
INSTRUCTOR: DAMIANI
DRAWING BY: AMIR-BEHAN JAHANBIN



MARIKA-ALDERTON HOUSE GLENN MURCUTT

EASTERN AMHEM LAND, AU
1991 - 1993

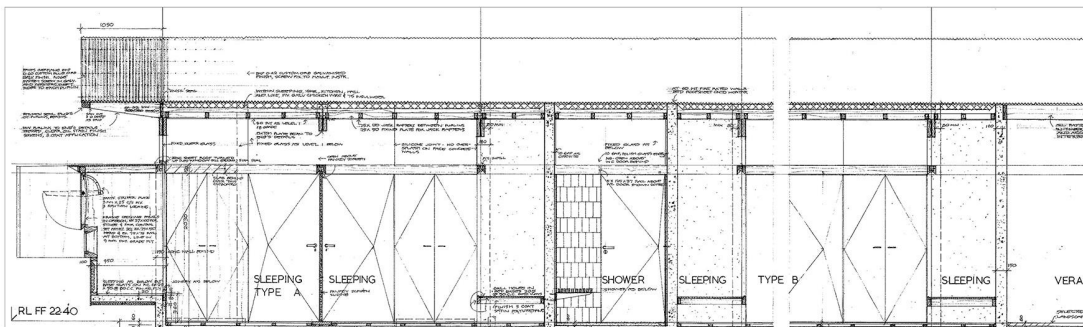
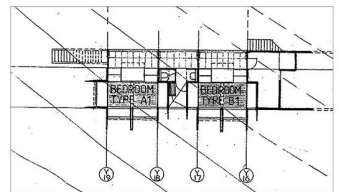
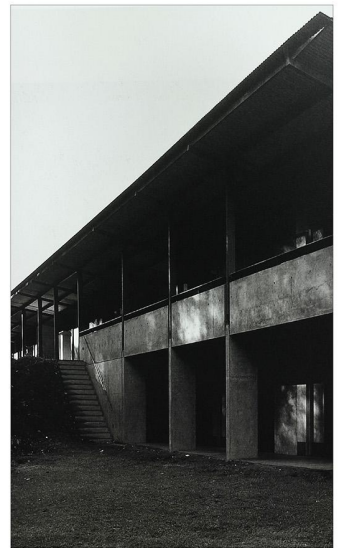
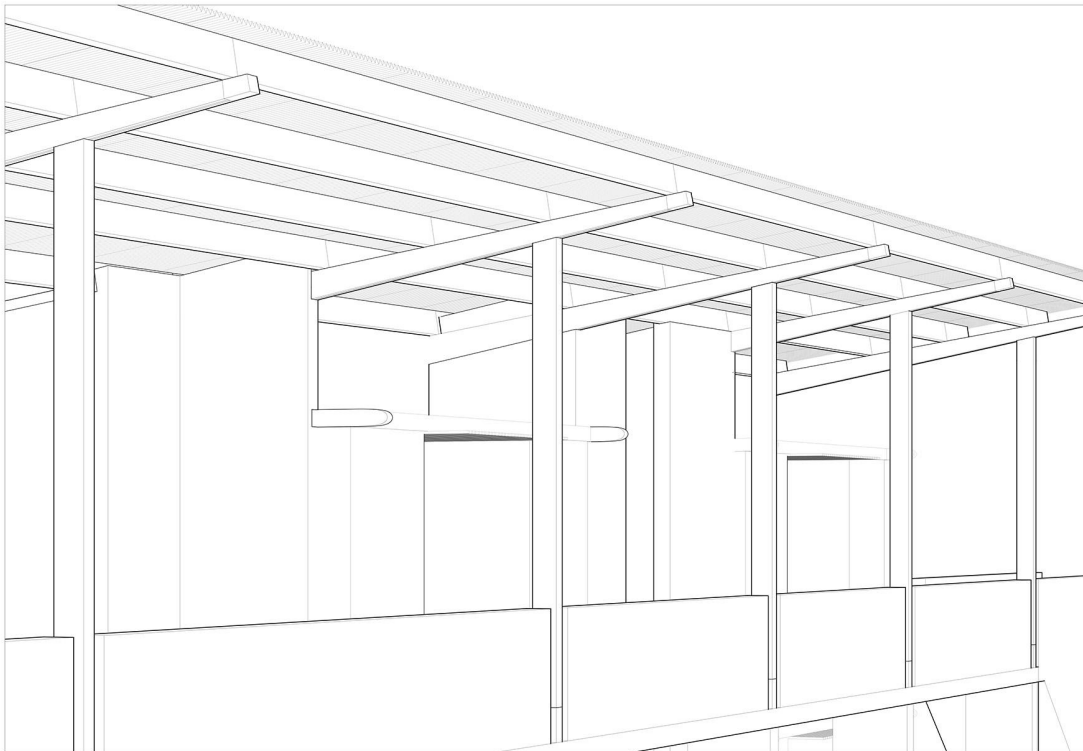
CORNER DETAIL

DETAILING ARCHITECTURE

SPRING 2015

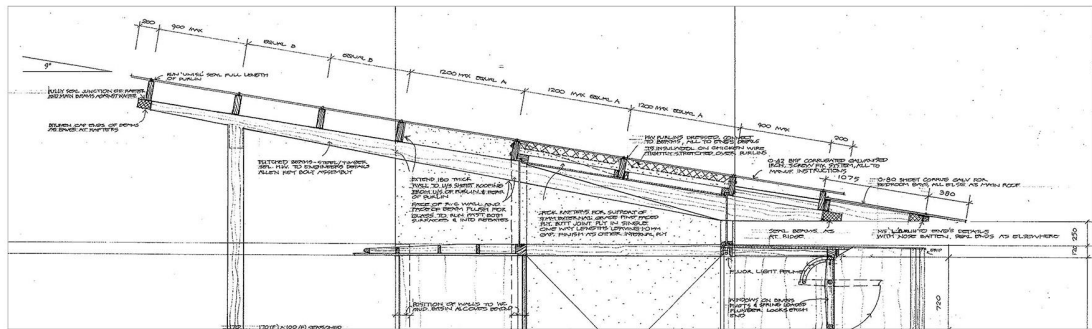
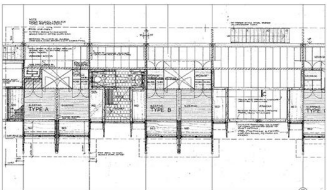
INSTRUCTOR: DAMIANI

DRAWING BY: AMIR-BEHAN JAHANBIN

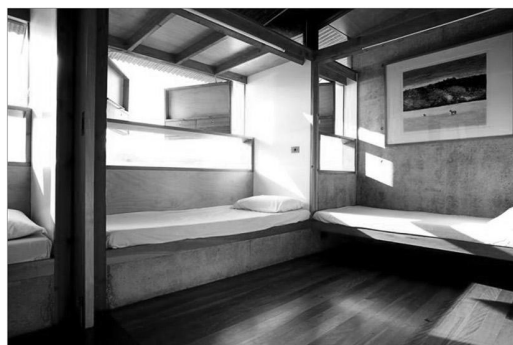
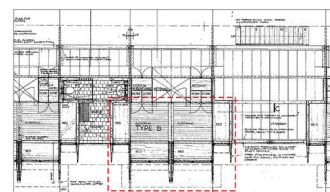
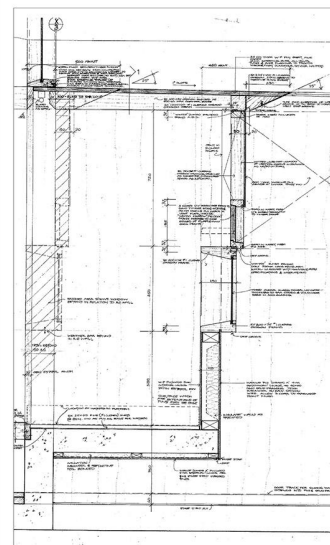
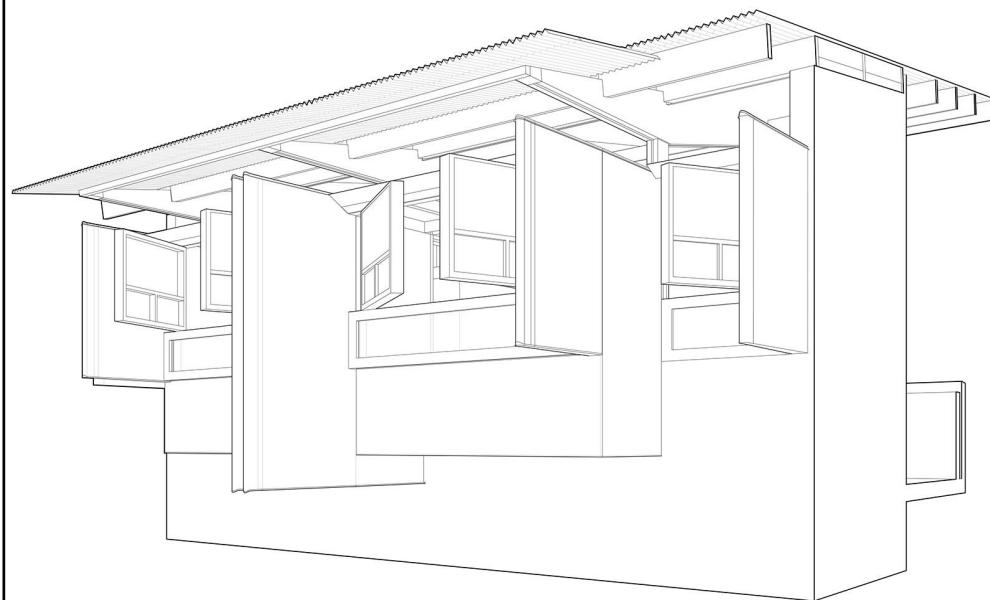


Arthur & Yvonne Boyd Education Centre
 Glenn Murcutt
 Riversdale, West Cambewarra, New South Wales, AU
 1996 - 1999
 DETAIL TYPE: Roof Assembly

 DETAILING ARCHITECTURE
 SPRING 2015
 INSTRUCTOR: DAMIANI
 DRAWING BY: Richard May



23



ARTHUR AND YVONNE BOYD
EDUCATION CENTER
GLENN MURCUTT
RIVERSDALE, NEW SOUTH WALES

YEAR: 1999

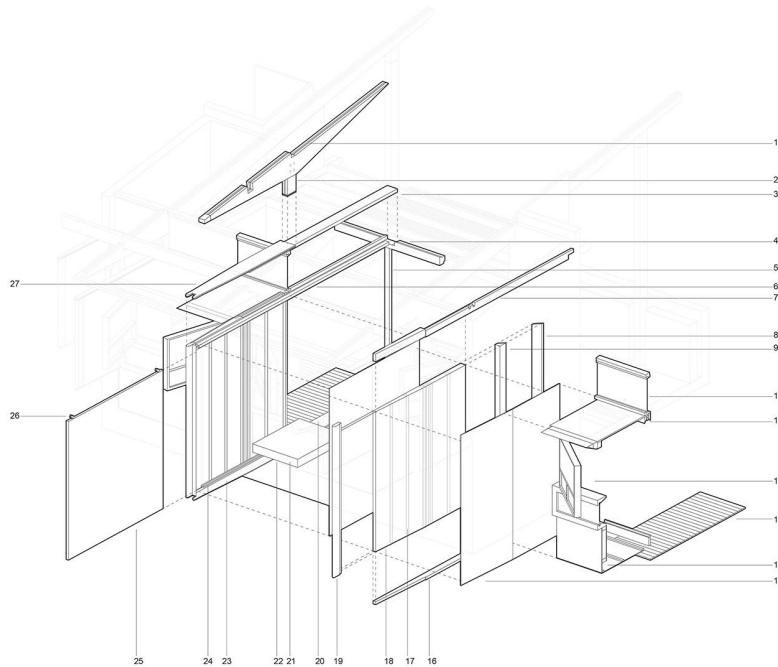
DETAIL TYPE: FIN ASSEMBLY

DETAILING ARCHITECTURE

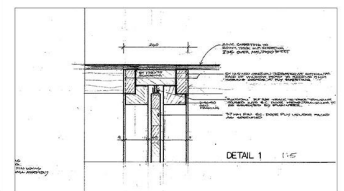
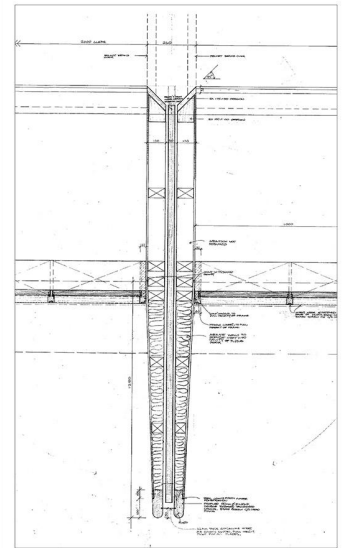
SPRING 2015

INSTRUCTOR: DAMIANI

DRAWING BY: HARRIS MAZUR



1. FLITCHED STEEL AND WOOD BEAM
2. FLITCHED STEEL AND WOOD COLUMN
3. OREGON WOOD BLOCKING (175mm x 75mm)
4. OREGON BEAM ASSEMBLY WITH WINDOW FRAME
5. WOOD STOP FOR BARN DOOR
6. STEEL TRACK FOR BARN DOOR
7. OREGON WOOD PELMET BEAM
8. OREGON WOOD COVER (32mm THICK)
9. OREGON WOOD COLUMN (150mm x 100mm)
10. SILICONE FIXED GLASS
11. FLUORESCENT LIGHTING
12. OPERABLE WINDOW ASSEMBLY
13. BRUSHBOX FLOORING
14. PLYWOOD LINING WITH PINE STRIPS (9mm)
15. EXTERIOR PLYWOOD LINING (9mm)
16. OREGON WOOD FIN SOLE PLATE
17. PINE WOOD STUD (50mm x 100mm)
18. INSULWOOL
19. TALLOWOOD NOSING
20. OREGON BOARD FOR FLOOR ACCENT
21. REINFORCED CONCRETE OVERHANG
22. EDGE STRIP AND DRIP EDGE
23. EDGE STRIP PLYWOOD UNDER FIN
24. BRASS T-TRACK FOR BARN DOOR
25. BARN DOOR (37mm)
26. ROUSTAN TRACK WHEEL
27. ZINC CAPPING



ARTHUR AND YVONNE BOYD
EDUCATION CENTER
GLENN MURCUTT
RIVERSDALE, NEW SOUTH WALES
YEAR: 1999

DETAIL TYPE: FIN ASSEMBLY

DETAILING ARCHITECTURE

SPRING 2015

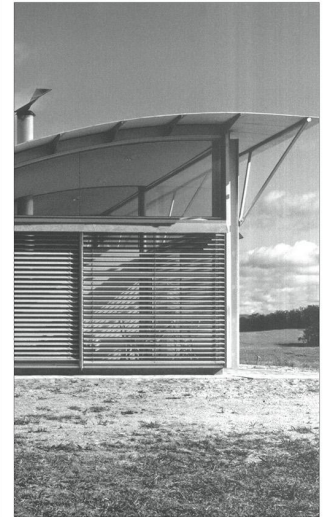
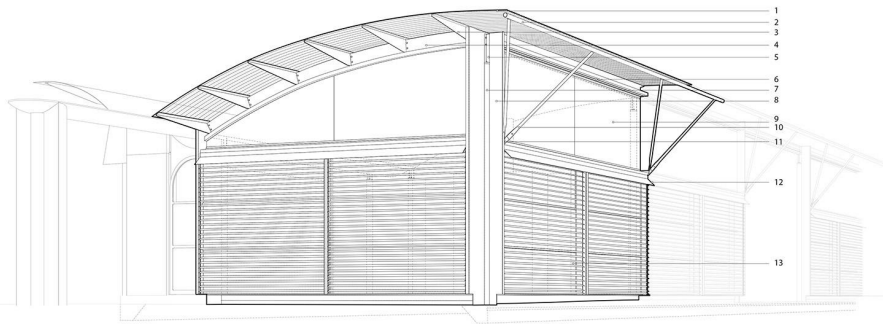
INSTRUCTOR: DAMIANI

DRAWING BY: HARRIS MAZUR

Perspective - Assembled

N.T.S.

- 1 Zincalume roof
- 2 galv pipe purlin
- 3 custom steel angle
- 4 aluminum fascia
- 5 custom steel corner assembly
- 6 galv pipe purlin
- 7 galv pipe column
- 8 custom steel plate
- 9 laminated glass
- 10 galv pipe strut
- 11 steel plate (8 mm)
- 12 aluminum cover
- 13 aluminum venetian blind assembly



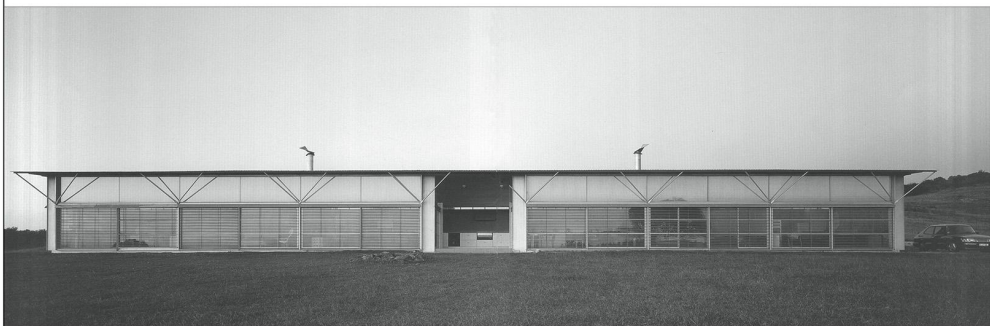
MAGNEY HOUSE GLENN MURCUTT

NEW SOUTH WALES, AU
1982 - 1984

DETAIL TYPE: CORNER DETAIL

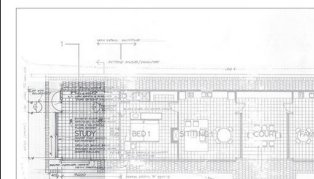
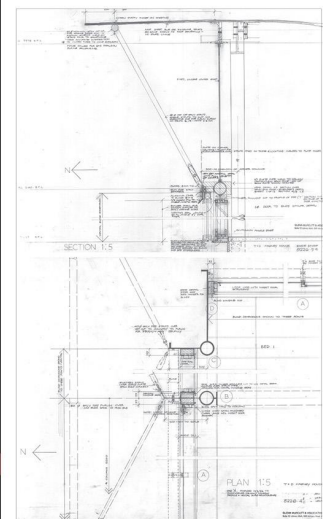
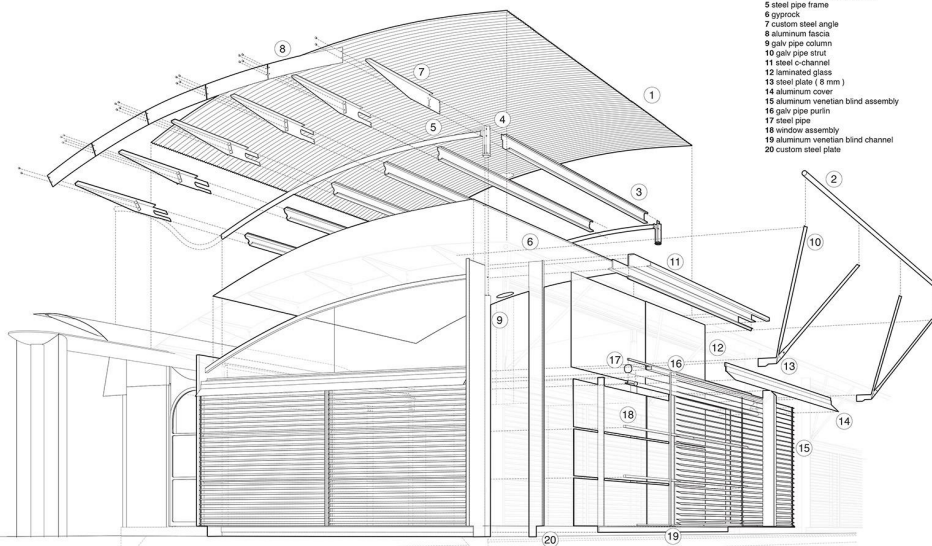
DETAILING ARCHITECTURE
SPRING 2015

INSTRUCTOR: DAMIANI
DRAWING BY: JOEL McCULLOUGH



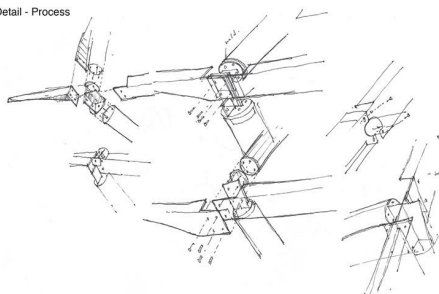
Exploded Perspective

N.T.S.



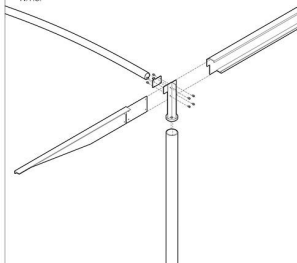
Corner Detail - Process

N.T.S.



Corner Detail - Exploded Axonometric

N.T.S.



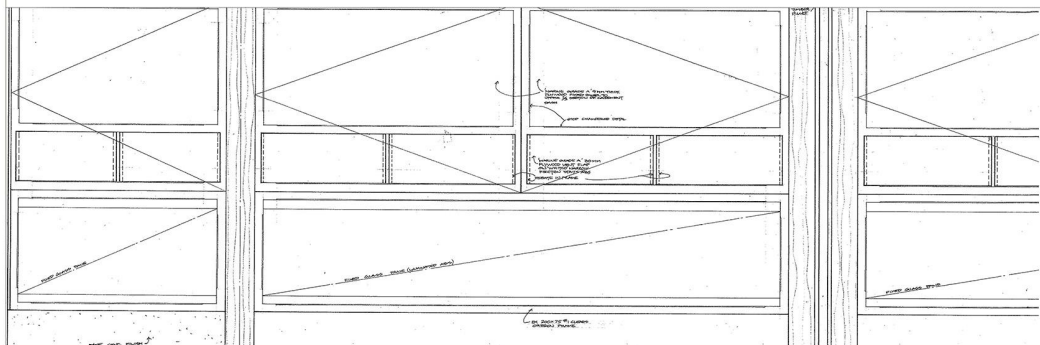
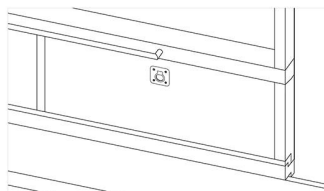
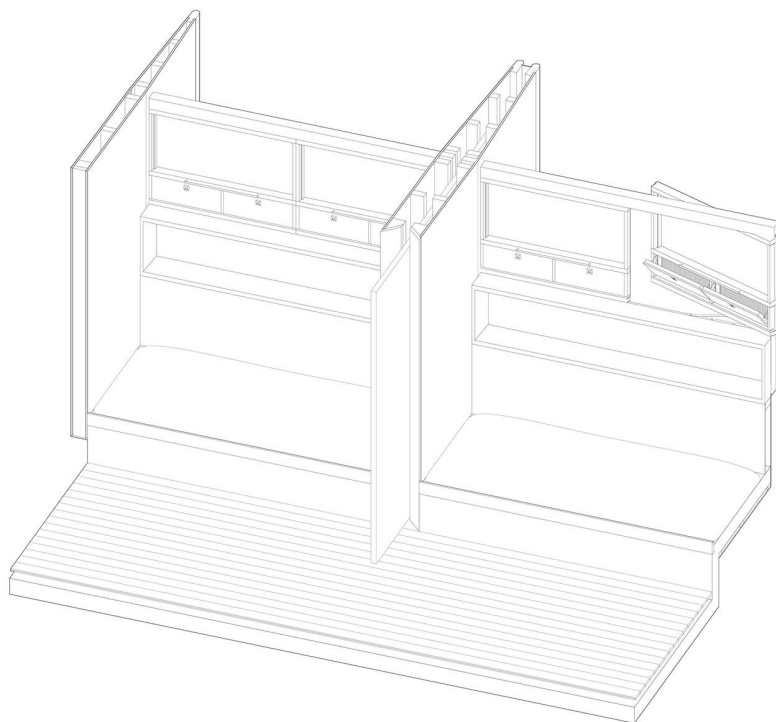
MAGNEY HOUSE GLENN MURCUTT

NEW SOUTH WALES, AU
1982 - 1984

DETAIL TYPE: CORNER DETAIL

DETAILING ARCHITECTURE
SPRING 2015

INSTRUCTOR: DAMIANI
DRAWING BY: JOEL McCULLOUGH



BOYD EDUCATION CENTRE

GLENN MURCUTT

RIVERSDALE, NSW

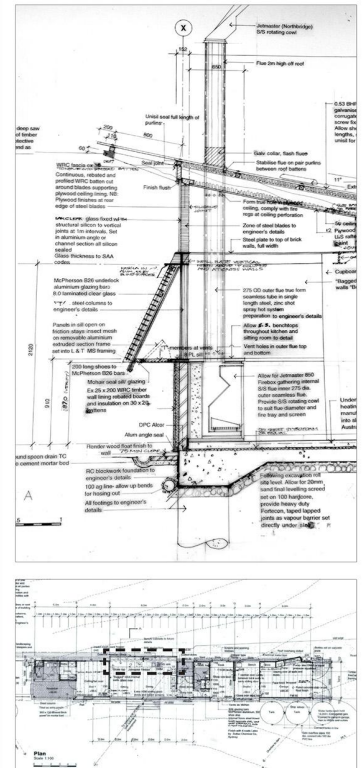
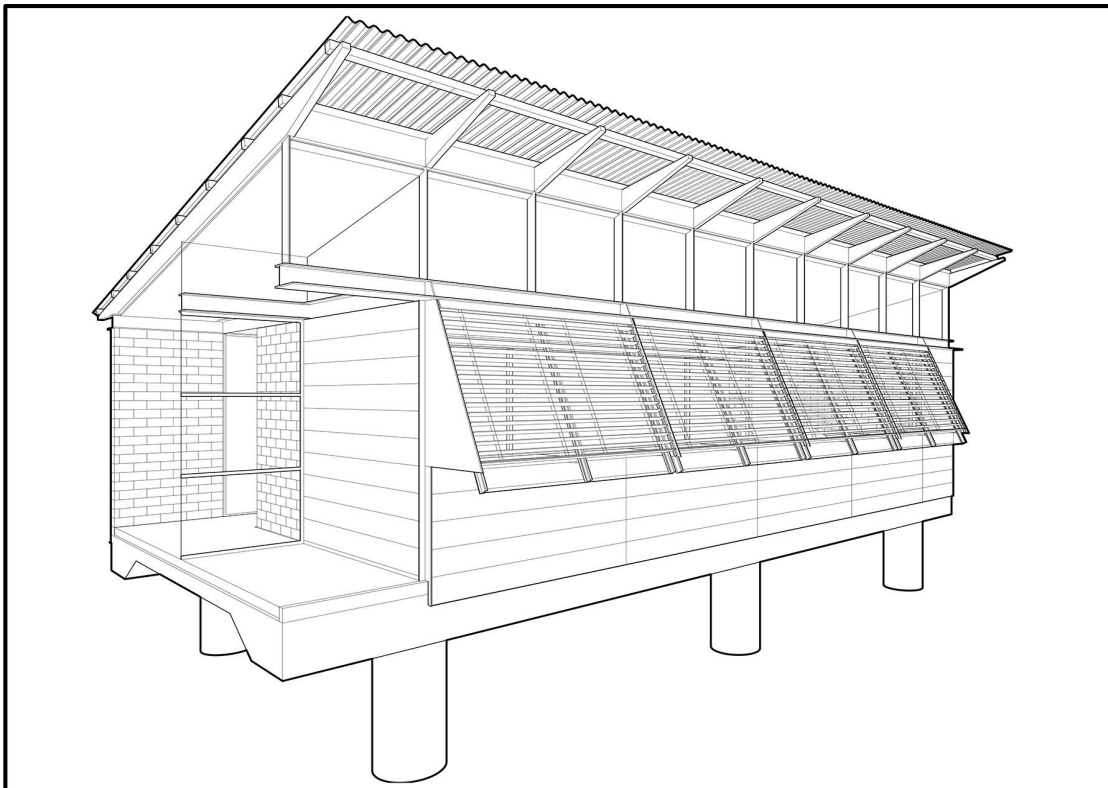
1996-1999

DETAIL TYPE: OPERABLE WINDOW
DETAILING ARCHITECTURE

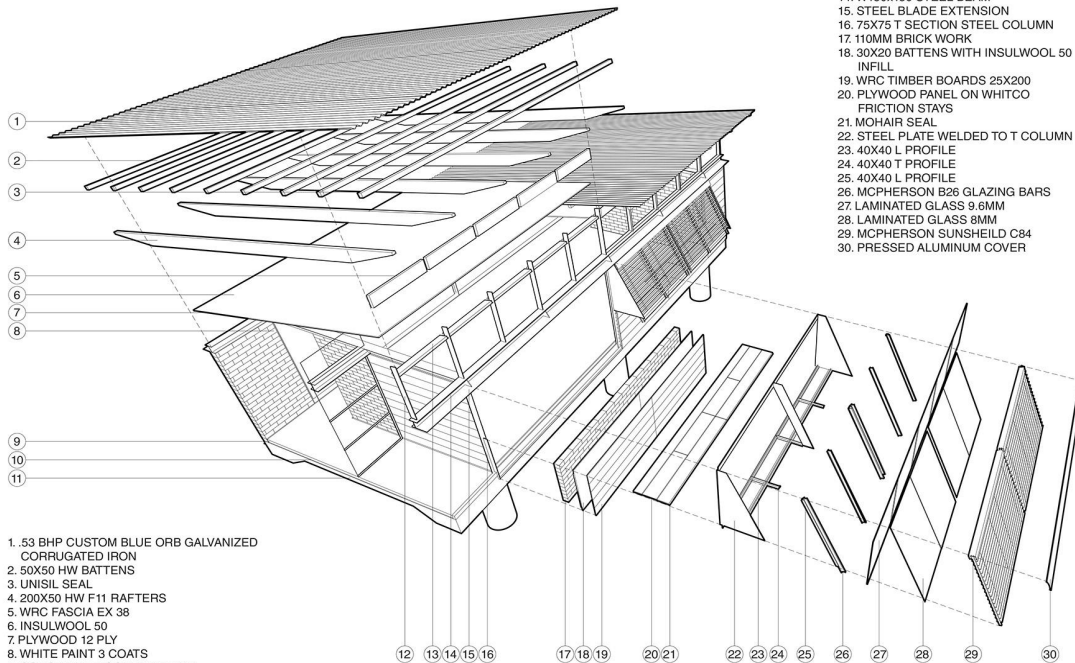
SPRING 2015

INSTRUCTOR: DAMIANI

DRAWING BY: THOMAS STERLING

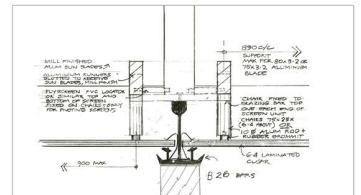


FLETCHER PAGE HOUSE
GLENN MURCUTT
KANGAROO VALLEY, NSW, AU
1997 - 2000
WINDOW WALL ASSEMBLY
DETAILING ARCHITECTURE
SPRING 2015
INSTRUCTOR : G. DAMIANI
DRAWING BY : DAN SZTANGA



1. 53 BHP CUSTOM BLUE ORB GALVANIZED CORRUGATED IRON
2. 50X50 HW BATTENS
3. UNISIL SEAL
4. 200X50 HW F11 RAFTERS
5. WRC FASCIA EX 38
6. INSULWOOL 50
7. PLYWOOD 12 PLY
8. WHITE PAINT 3 COATS
9. CONCRETE FLOOR FF RL 99.5
10. STYROFOAM INSULATION EX 20
11. CONCRETE SLAB

12. STEEL BLADES
13. WRC BATTEN REBATED TO MEET CEILING
14. W150X150 STEEL BEAM
15. STEEL BLADE EXTENSION
16. 75X75 T SECTION STEEL COLUMN
17. 110MM BRICK WORK
18. 30X20 BATTENS WITH INSULWOOL 50 INFILL
19. WRC TIMBER BOARDS 25X200
20. PLYWOOD PANEL ON WHITCO FRICTION STAYS
21. MOHAIR SEAL
22. STEEL PLATE WELDED TO T COLUMN
23. 40X40 L PROFILE
24. 40X40 T PROFILE
25. 40X40 L PROFILE
26. MCPHERSON B26 GLAZING BARS
27. LAMINATED GLASS 9.6MM
28. LAMINATED GLASS 8MM
29. MCPHERSON SUNSHIELD C84
30. PRESSED ALUMINUM COVER



FLETCHER PAGE HOUSE GLENN MURCUTT KANGAROO VALLEY, NSW, AU 1997 - 2000 WINDOW WALL ASSEMBLY

DETAILING ARCHITECTURE
 SPRING 2015
 INSTRUCTOR: G. DAMIANI
 DRAWING BY: DAN SZTANGA

Gerard Damiani, Associate Professor
Carnegie Mellon University, School of Architecture
2015

