

It would be inaccurate to assume gritty urban infill only exists in Europe. As this project demonstrates, the American architects are also producing work that attains

identity through the layering of pre- and post-industrial forms of expression. This project explores how a region's past can influence the form and use of a vacant city plot, located

**LIVE / WORK STUDIO,  
PITTSBURGH, USA**  
ARCHITECT  
**STUDIO D'ARC ARCHITECTS**

# SOUTH SIDE STOREYS

Live/work urban infill in Pittsburgh, Pennsylvania.

1 From street, the facade is presented as a series of layers, alluding to the complex layering of functions in this part of the city.  
2 To the rear, a more solid 'complete' composition presents a more domestic face.



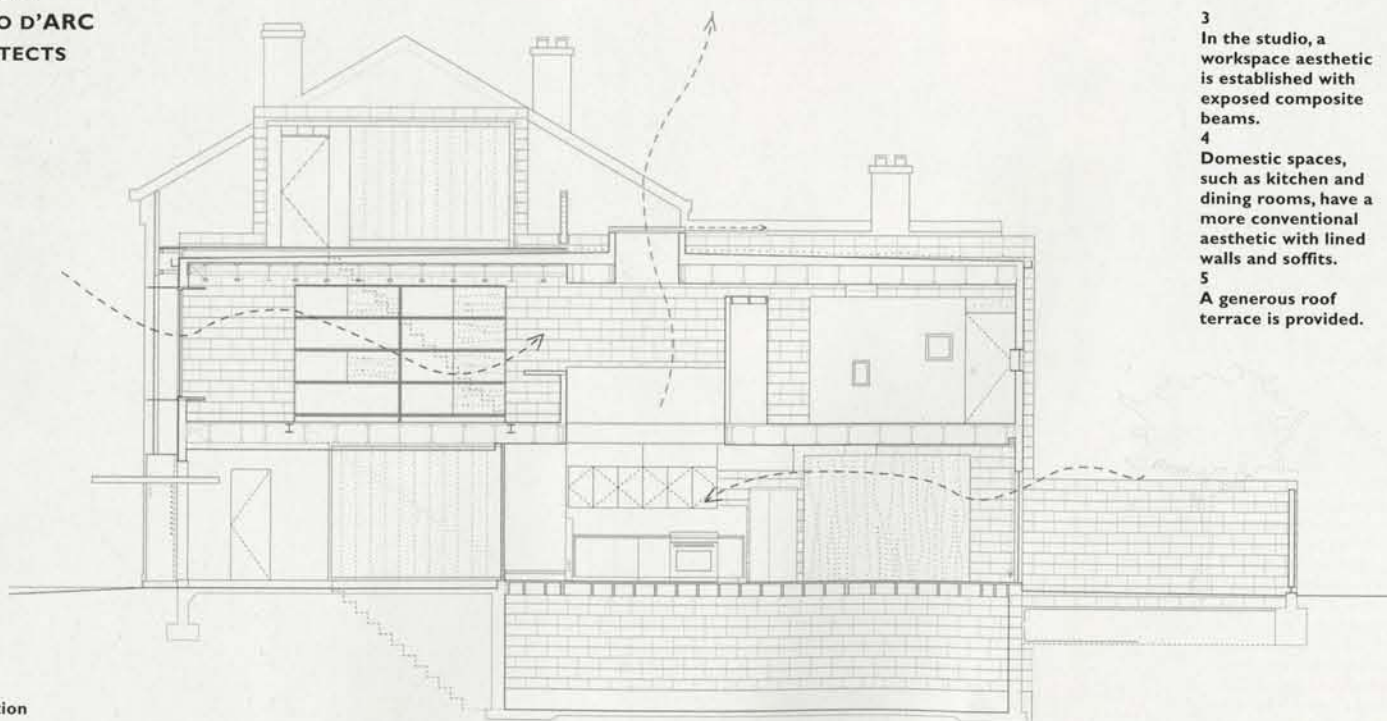
within Pittsburgh's historic South Side neighbourhood. Historically known for its production of steel and glass, the plot is influenced by both residential and industrial scales, and in response mixes the language of domestic and industrial architecture. Transforming on each level, three interiors capture three unique aspects relating to street, neighbourhood and landscape.

Built as home and studio, living, working, dining, cooking and sleeping space sits between exposed block work party walls, and a linear core runs along one party wall, containing stairs, kitchen and sanitary provision. In the studio, spanning between party walls, exposed composite beams give the space an industrial aesthetic that distinguishes workplace from home, as remaining domestic spaces have conventional plaster soffits. The architect also speaks of a transition from front to back, describing how a series of eroded layers on the facade transform into something more solid and 'finished' at the back R. G.

**Architect**  
studio d'ARC architects, Pittsburgh

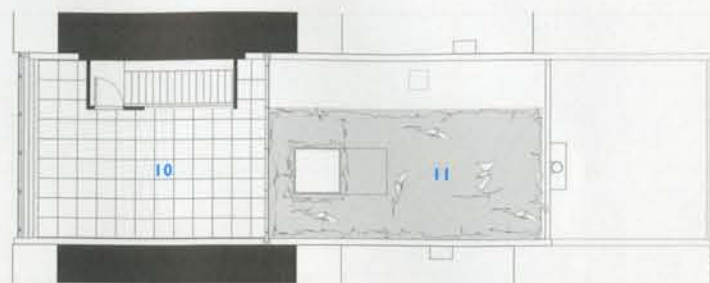
**Photographs**  
Massery Photography

**LIVE / WORK STUDIO,  
PITTSBURGH, USA**  
ARCHITECT  
**STUDIO D'ARC  
ARCHITECTS**



long section

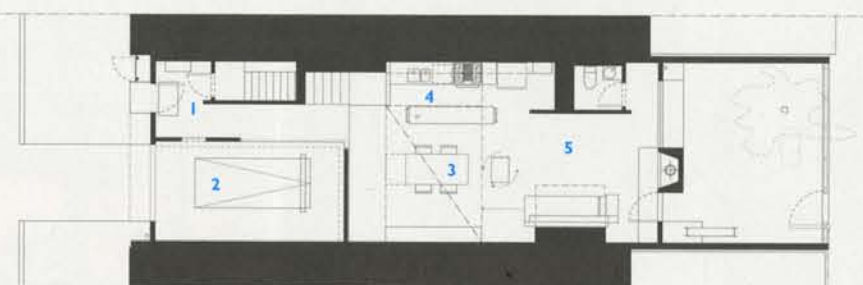
- 1 entrance
- 2 garage
- 3 dining area
- 4 kitchen
- 5 living room
- 6 garden
- 7 studio
- 8 void
- 9 master bedroom suite
- 10 roof terrace
- 11 green roof



roof terrace plan



first floor plan



ground floor, entrance level plan

- 3 In the studio, a workspace aesthetic is established with exposed composite beams.
- 4 Domestic spaces, such as kitchen and dining rooms, have a more conventional aesthetic with lined walls and soffits.
- 5 A generous roof terrace is provided.

